



# EDI SOFTWARE

## EDI Orders and Invoicing - Overview

The EDI program imports purchase orders from your customer or via a clearing house and then creates sales orders in your accounting database .

Files are read from via transfers or secure FTP (SFTP) and placed in the folders that are continually scanned.

A Buyer ID is used to tie customers to the purchase orders from the Buyer. The Buyer ID on a customer will match the %Store No in the buyers purchase order files.

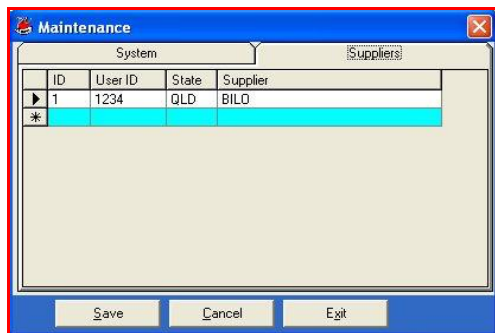
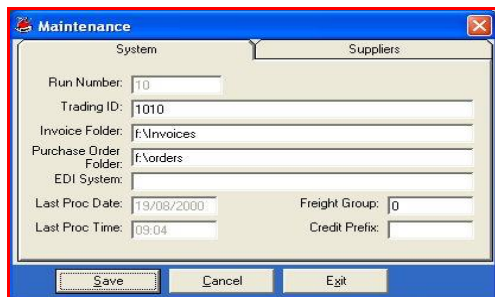
The barcode field in the inventory table is matched against the Product Code field in the purchase order detail lines.

The delivery date on created sales order uses the requested date from the buyer.

The program periodically checks for new files and imports the purchase orders into the order grid.

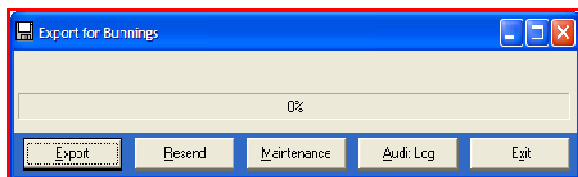
## EDI Orders and Invoicing - Setup

System setup is controlled by a maintenance option. Once these are set up they are generally not altered.



## EDI Orders and Invoicing - Release

The export option collates invoices for EDI customers that have been created since the last export and transmits these.



## EDI Orders and Invoicing – Purchase Orders

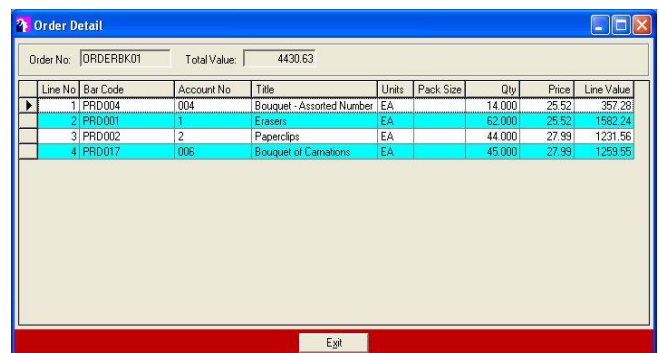
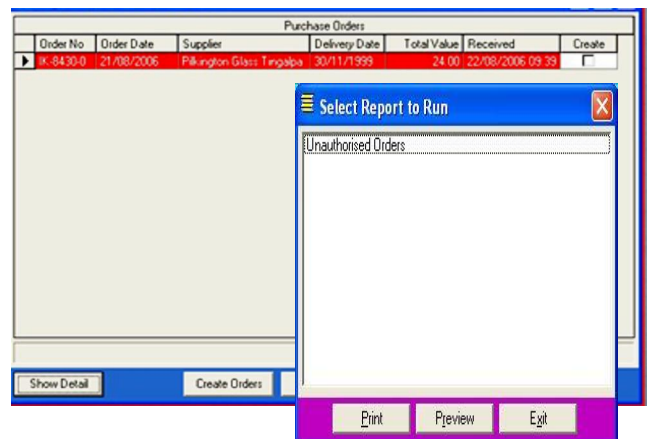
This screen shows all purchase orders that have not yet been created. If a certain amount of time has elapsed from the time an order was imported, the colour of the row in the grid will change to red to highlight this fact. This time is stored in the setup file and is used to warn you if the maximum confirmation time is close to being reached.

The price displayed on the orders grid is used when creating orders and depends on a setting in the setup file. This is usually set to use the Buyer price.

The options are either the Agreed Price contained in the purchase order files from the buyer or is determined from the customer's price number and special prices table. If the special prices do not exist the customer's price is used according to the customer's group price number. Price variations are logged if accounting system is set to use multiple locations, a default location for each customer is used to determine the stock location on the Sales order.

## EDI Orders and Invoicing – Order Detailed

This screen displays the details of the orders that are ready to be created. You can re-sort the grid by clicking on the column heading. The accountNo and Title are read from Products.



## Other Options catered for:

- Delivery Direct orders
- Off Range products orders
- Email alerts for rejected orders